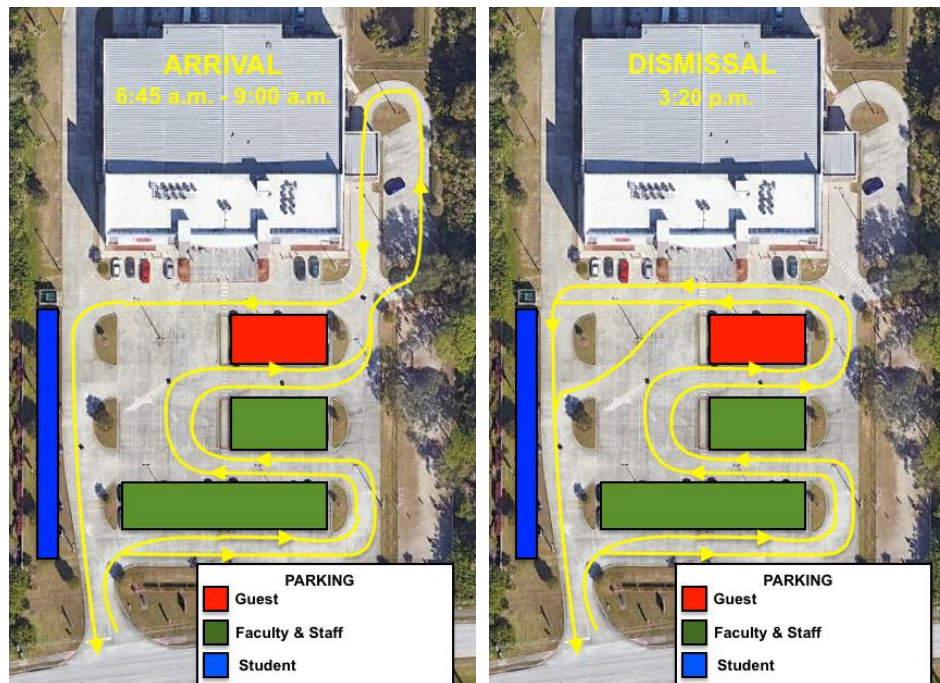


2.08 ARRIVAL AND DISMISSAL PROCEDURE

1. General Rules

- Car loop follows the pattern outlined on Campus Traffic & Parking Map.
- The parking lot speed limit is 5 mph.
- Designated parking areas are highlighted on the map. Parking is prohibited in the designated carlines at any time.
- With the exception of student drivers, no student may be dropped off in the parking lot to walk into the school without a parent/guardian escort. Late arrivals must park in the Guest Parking Area and escort students into school.
- Students are dismissed via CurbSmart, using numbered car loop tags. Parents/guardians will be provided tags before their student starts school. This tag must be displayed at all times during dismissal. Email info@parkhurst.org if you require an additional/replacement tag.
- Use of personal electronic devices (cell phones, tablets, etc.) while in car loop is strictly prohibited.
- From 8:00 a.m. - 9:00 a.m. and again from 3:00 p.m. - 4:00 p.m., vehicles exiting the Eau Gallie Campus are **limited to WESTBOUND turns only**. Eastbound turns will block the flow of car loop and are not permitted. There is a turn lane less than 0.25 mile west of the campus.

2. Eau Gallie Campus Traffic & Parking Map



3. Port Orange Campus Traffic Map



4. Arrival and Dismissal Times

	Regular School Day	Early Release Day
Before care begins	6:45 a.m.	
Earliest students may be dropped off and not charged for before care	8:05 a.m.	
Classrooms open	8:10 a.m.	
Classes start	8:30 a.m.	
Car loop opens for dismissal	3:00 p.m.	12:45 p.m.
Student driver dismissal via CurbSmart	3:17 p.m.	12:57 p.m.
Dismissal for all car loop via CurbSmart	3:20 p.m.	1:00 p.m.
Latest a student may be picked up and not charged for after care	3:59 p.m.	1:39 p.m.
After care ends	6:00 p.m.	

- Student must arrive early for security screening. Tardies due to security screening are not excused.
- Clubs, athletics, performing arts, etc. may have different dismissal times. They will be announced via email.
- Students must enter through the east-side door from 6:45 a.m. – 9:00 a.m. Parents/guardians must have prior approval from administration to enter during this time.

- Students and parents/guardians must enter through the south, main entrance doors (center doors) from 9:00 a.m. – 6:00 p.m.

5. Authorized Pick-Up

- Students will be released to individuals on their authorized pick-up list.
- Those individuals must have a photo on file and a numbered car loop tag displayed.
- A government identification is required if a photo is not on file.
- Students will not be released to individuals not listed on their list.
- Parents/guardians may amend their list by logging into their CurbSmart account.
- Temporary permission to pick up a student may only be granted by a parent/guardian through their CurbSmart account.